

**AGI  WESTFIELD**

***SWINGAWAY AUGERS***

***MKX<sup>2</sup> | X<sup>2</sup>***



# GRAIN MOVING SOLUTIONS

Since 1951, AGI Westfield augers have led the auger industry by improving the efficiency and bottom line of producers. AGI Westfield grain augers are manufactured with quality materials, components and features to provide value and performance.

## KEY UPDATES

### New open discharge spout

- More efficient flow, leading to a reduction in hp requirements and plugging

### Durable boot

- Separate abrasion resistant (AR) boot flighting with removable shafts provides a longer lifespan and makes servicing easier (13" and 16")
- Tapered lower bearing increases lifespan (13" and 16")
- Hanger bearing to help support the boot flight reducing operation noise (13" and 16")
- Easier inspections and servicing with dual side boot clean-out doors (13")
- Steel hydraulic lines provide a cleaner look and reduce leakage risk
- Updated PTO holder for easier in-transport hook up (13")
- Updated hose holder (13")

### Responsive steerable axles

- Easy maneuvering around tight bin yards and corners
- Optional on 13" and standard on 16"

### Additional updates

- 30' tubes and flighting lessens connections and reduces noise
- Transition neck flight support provides better alignment and improves lifespan (13" and 16")
- Optional downspout
- Improved right angle drive to increase gearbox stability (13")
- Right angle drive compatible with speed reducer allows for 90-degree tractor positioning while reducing speeds from 1000 rpm to 540 rpm operating speed









# MKX<sup>2</sup> 10

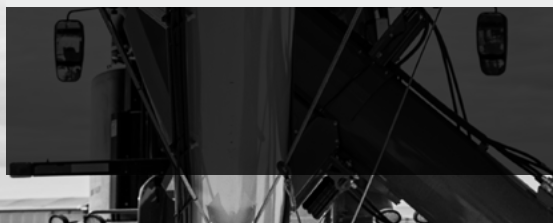
UP TO 6,000 BPH  
53' - 83' LENGTHS

## KEY FEATURES

- New open discharge spout decreases horsepower requirements
- Aircraft cable trussing
- Stable A-frame support (53'-83')
- Wide standing axles
- Strong scissor-lift frame (63'-83')

## OPTIONS

- Hydraulic hopper winch
- Electric and hydraulic power swing
- Reverser kit
- Corn screen
- Poly flex spout
- Right angle drive
- LED work lights



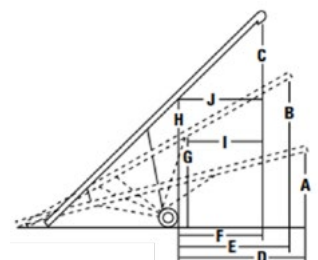
## A-frame

|  | MKX <sup>2</sup> 10-53  | MKX <sup>2</sup> 10-63 | MKX <sup>2</sup> 10-73         | MKX <sup>2</sup> 10-83  |
|--|---|------------------------|--------------------------------|---|
| TUBE GAUGE                                   | 12 ga   |                        |                                |   |
| TUBE CONNECTORS                              | Heavy-duty 3/16" (0.5 cm) angle flange  |                        |                                |   |
| MAIN FLIGHTING                               | 9" (22.9 cm) OD x 7 ga stretched and welded with Wear Edge Technology™ on critical points                     |                        |                                |   |
| WEAR EDGE TECHNOLOGY™<br>(REINFORCED FLIGHT) | 1/4" (0.6 cm) plus 10 ga ribbon weld = 5/16" (0.8 cm) Wear Edge Technology™ on critical grain transfer points |                        |                                |   |
| FLIGHTING SHAFT                              | High strength 2" (5.1 cm) OD x 11 ga tubing square flight connection  |                        |                                |   |
| UPPER BEARING                                | 2" (5.1 cm) taper roller bearing assembly   |                        |                                |   |
| LOWER BEARING                                | 1 1/2" (3.8 cm) pillow block greaseable ball bearing  |                        |                                |   |
| TUBE TRUSSING                                | 5/16" (0.8 cm) aircraft type galvanized steel cable   |                        |                                | 3/8" (1 cm) aircraft type galvanized steel cable                      |
| HYDRAULIC LIFT                               | Single 4" (10.2 cm) cylinder with 5/16" (0.8 cm) aircraft cable   |                        |                                | One 4 1/2" (11.4 cm) cylinder with 3/8" (1 cm) aircraft cable         |
| UNDERCARRIAGE                                | 3" (7.6 cm) x 11 ga A-frame   |                        | 3.5" (9 cm) x 11 ga HSS tubing | 4" (10.2 cm) x 1 ga HSS tubing  |
| AXLE   | 2 1/2" (6.4 cm) x 2 1/2" (6.4 cm) x 1/8" (0.3 cm) wall square tubing  |                        |                                | 3 1/2" (8.9 cm) x 3 1/2" (8.9 cm) x 3/16" (0.5 cm) wall square tubing |
| HUB  | 4-bolt agricultural type  |                        |                                | Heavy-duty 6-bolt iron hubs   |
| TIRES  | 15" (38.1 cm)   |                        |                                | 16" (40.6 cm)   |
| PTO SHAFT                                    | 14E constant velocity with 5/16" (8 mm) shear bolt  |                        |                                | 35E constant velocity with 5/16" (8 mm) shear bolt                    |
| PARKING JACK                                 | 2000 lbs (907.2 kg) side wind   |                        |                                |   |
| SPROCKET & CHAIN                             | Hardened tooth sprocket with #60 chain  |                        |                                |   |
| LOW PROFILE HOPPER DIMENSIONS                | 63" length (160 cm) x 40" width (101.6 cm) x 10.5" height (26.7 cm)   |                        |                                |   |
| PSI REQUIRED TO RAISE AUGER                  | 1000 psi (68.9 bar)   | 1200 psi (82.7 bar)    | 1400 psi (96.5 bar)            | 1800 psi (124.1 bar)  |
| HP REQUIRED (WITH DRY WHEAT)                 | 45-50 hp  | 50-60 hp               | 55-65 hp                       | 65-75 hp  |
| WHEEL TREAD                                  | 106" (2.7 m)  | 112" (2.8 m)           | 118" (3 m)                     | 112" - 144" (2.8 m - 3.7 m)   |
| TRANSPORT HEIGHT (18" HITCH)                 | 12' 6" (3.8 m)  | 13' 6" (4.1 m)         | 14' 6" (4.5 m)                 | 13' (4 m)   |

## SPECIFICATIONS

|                  | A               | B               | C               | D                | E               | F               | G                  | H                | I                 | J                |
|------------------|-----------------|-----------------|-----------------|------------------|-----------------|-----------------|--------------------|------------------|-------------------|------------------|
| MKX <sup>2</sup> | HEIGHT LOWERED  | HEIGHT HALFWAY  | HEIGHT RAISED   | REACH LOWERED    | REACH HALFWAY   | REACH RAISED    | HEIGHT AT LIFTARMS | HEIGHT AT WHEELS | REACH TO LIFTARMS | REACH TO WHEELS  |
| <b>1036</b>      | 9'-8" (2.95 m)  | 16'-7" (5.1 m)  | 21'-10" (6.7 m) | 17'-9" (5.4 m)   | 17'-11" (5.5 m) | 18'-6" (5.6 m)  | 9'-9" (3 m)        | 10'-6" (3.2 m)   | 17'-5" (5.3 m)    | 19'-9" (6 m)     |
| <b>1053</b>      | 10'-8" (3.3 m)  | 24'-6" (7.5 m)  | 36'-7" (11.2 m) | 27'-1" (8.3 m)   | 25'-1" (7.6 m)  | 22'-5" (6.8 m)  | 14'-10" (4.5 m)    | 16'-10" (5.1 m)  | 21'-11" (6.7 m)   | 24'-7" (7.5 m)   |
| <b>1063</b>      | 11'-7" (3.5 m)  | 26'-3" (8 m)    | 41'-6" (12.6 m) | 32'-3" (9.8 m)   | 30'-6" (9.3 m)  | 26'-9" (8.2 m)  | 16'-5" (5 m)       | 19'-2" (5.8 m)   | 24'-9" (7.5 m)    | 29'-4" (8.9 m)   |
| <b>1073</b>      | 12'-10" (3.9 m) | 29'-8" (9 m)    | 48'-4" (14.8 m) | 36'-10" (11.2 m) | 34'-8" (10.6 m) | 29'-7" (9 m)    | 19' (5.8 m)        | 22'-2" (6.8 m)   | 27'-4" (8.3 m)    | 33'-6" (10.2 m)  |
| <b>1083</b>      | 11'-3" (3.4 m)  | 34'-5" (10.5 m) | 55' (16.8 m)    | 43'-9" (13.3 m)  | 40'-4" (12.3 m) | 33'-3" (10.1 m) | 21'-7" (6.6 m)     | 25' (7.6 m)      | 31'-6" (9.6 m)    | 37'-9" (11.5 m)  |
| <b>1093</b>      | 10'-6" (3.2 m)  | 37'-3" (11.4 m) | 60'-3" (18.4 m) | 45'-8" (13.9 m)  | 42'-11" (13 m)  | 37'-1" (11.3 m) | 24'-10" (7.6 m)    | 29'-9" (9 m)     | 31'-9" (9.7 m)    | 39'-10" (12.1 m) |

Heights measured from bottom of auger spout to ground.





# ***X<sup>2</sup> 10***

## ***SCISSOR LIFT***

***UP TO 6,000 BPH  
63' - 83' LENGTHS***





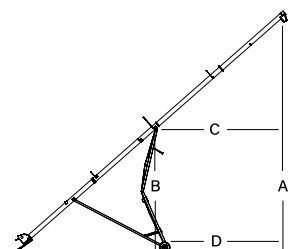
## Scissor Lift

|  | X <sup>2</sup> 10-63   | X <sup>2</sup> 10-73 | X <sup>2</sup> 10-83                      |
|--|--|----------------------|---|
| TUBE GAUGE                                   | 12 ga  |                      |   |
| TUBE CONNECTORS                              | Heavy-duty 3/16" (0.5 cm) angle flange   |                      |   |
| MAIN FLIGHTING                               | 9" (22.9 cm) OD x 7 ga stretched and welded with Wear Edge Technology™ on critical points    |                      |   |
| WEAR EDGE TECHNOLOGY™<br>(REINFORCED FLIGHT) | Hopper + inclined tube feature 10 ga ribbon weld· Wear Edge Technology™                      |                      |   |
| FLIGHTING SHAFT                              | High strength 2" (5.1 cm) OD x 11 ga tubing square flight connection                         |                      |   |
| UPPER BEARING                                | 2" (5.1 cm) taper roller bearing assembly  |                      |   |
| LOWER BEARING                                | 1 1/2" (3.8 cm) pillow block greaseable ball bearing   |                      |   |
| TUBE TRUSSING                                | 3/8" (1 cm) aircraft type galvanized steel cable   |                      |   |
| HYDRAULIC LIFT                               | 4" (10.2 cm) single acting cylinder  |                      |   |
| UNDERCARRIAGE                                | 4" (10.2 cm) x 8" (20.3 cm) scissor lift   |                      |   |
| AXLE   | 3" (7.6 cm) x 6" (15.2 cm) tubing  |                      |   |
| HUB  | 6-Bolt agricultural type   |                      |   |
| TIRES  | 16" (40.6 cm) TRF  |                      |   |
| PTO SHAFT                                    | 14E constant velocity with one shear bolt  |                      | 35E constant velocity with one shear bolt |
| PARKING JACK                                 | 2,000 lbs (907.2 kg) side wind   |                      |   |
| SPROCKET & CHAIN                             | Hardened tooth sprocket with HD #60 chain  |                      |   |
| LOW PROFILE HOPPER DIMENSIONS                | 60" (152.4 cm) length x 48" (121.9 cm) width x 10 1/2" (26.7 cm) height with flat free tires |                      |   |
| PSI REQUIRED TO RAISE AUGER                  | 1200 psi (82.7 bar)  | 1400 psi (96.5 bar)  | 1600 psi (110.3 bar)                      |
| HP REQUIRED (WITH DRY WHEAT)                 | 50-60 hp   | 55-65 hp             | 65-75 hp                                  |
| WHEEL TREAD                                  | 132" (335.3 cm)  | 132" (335.3 cm)      | 132" - 180" (335.3 - 457.2 cm)            |
| TRANSPORT HEIGHT (18" HITCH)                 | 13' (4 m)  | 13' (4 m)            | 13' (4 m)                                 |

## SPECIFICATIONS

|                | A                  |                    |                    | B                 |                   |                   | C                  |                     |                     | D                  |                    |                   |
|----------------|--------------------|--------------------|--------------------|-------------------|-------------------|-------------------|--------------------|---------------------|---------------------|--------------------|--------------------|-------------------|
| X <sup>2</sup> | HEIGHT<br>LOWERED  | HEIGHT<br>HALFWAY  | HEIGHT<br>RAISED   | HEIGHT<br>LOWERED | HEIGHT<br>HALFWAY | HEIGHT<br>RAISED  | HEIGHT<br>LOWERED  | HEIGHT<br>HALFWAY   | HEIGHT<br>RAISED    | HEIGHT<br>LOWERED  | HEIGHT<br>HALFWAY  | HEIGHT<br>RAISED  |
| 1063           | 11'-3"<br>(3.4 m)  | 28'-10"<br>(8.8 m) | 43'-8"<br>(13.3 m) | 6'-9"<br>(2.1 m)  | 14'-8"<br>(4.5 m) | 22'-5"<br>(6.8 m) | 32'-9"<br>(10 m)   | 31'-1"<br>(9.5 m)   | 26'-4"<br>(8 m)     | 32'-9"<br>(10 m)   | 24'-11"<br>(7.6 m) | 30'-1"<br>(9.2 m) |
| 1073           | 10'-11"<br>(3.3 m) | 31'-3"<br>(9.5 m)  | 48'-1"<br>(14.7 m) | 6'-9"<br>(2.1 m)  | 16'-4"<br>(5 m)   | 25'-4"<br>(7.7 m) | 36'-8"<br>(11.1 m) | 34'-11"<br>(10.6 m) | 30'-1"<br>(9.2 m)   | 36'-8"<br>(11.2 m) | 34'-1"<br>(10.4 m) | 29'-4"<br>(8.9 m) |
| 1083           | 11'-1"<br>(3.4 m)  | 35'-4"<br>(10.8 m) | 55'-3"<br>(16.8 m) | 6'-9"<br>(2.1 m)  | 18'-1"<br>(5.5 m) | 28'-6"<br>(8.7 m) | 42'-3"<br>(12.9 m) | 40'-1"<br>(12.2 m)  | 33'-11"<br>(10.3 m) | 42'-3"<br>(12.9 m) | 38'-5"<br>(11.7 m) | 31'-1"<br>(9.5 m) |

Heights measured from bottom of auger spout to ground.



# MKX<sup>2</sup> 13

UP TO 11,000 BPH  
64' - 114' LENGTHS

## KEY FEATURES

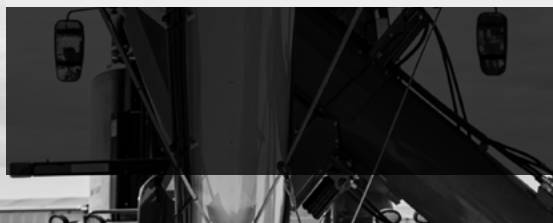
- New open discharge spout decreases horsepower requirements
- Aircraft cable trussing
- Stable A-frame support (64'-114')
- Wide standing axles
- Rigid steel trussing (84' and up)
- Strong scissor-lift frame (74'-114')

## OPTIONS

- Steerable axles
- Hydraulic hopper winch
- Electric and hydraulic power swing
- X-Tend hopper
- X-Over hopper
- Poly flex spout
- Speed reducer-reverser
- Reverser kit
- Corn screen
- Right angle drive
- Transport lights
- LED work lights



See new  
axles  
in action





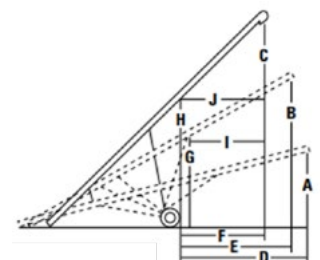
## A-frame

|   | MKX <sup>2</sup> 13-64   | MKX <sup>2</sup> 13-74 | MKX <sup>2</sup> 13-84  | MKX <sup>2</sup> 13-94                 | MKX <sup>2</sup> 13-114 |
|---|--|------------------------|---|--|-------------------------|
| TUBE GAUGE                                  | 12 ga  |                        |   |  |                         |
| TUBE CONNECTORS                             | Heavy-duty ¼" (0.6 cm) angle flange  |                        |   |  |                         |
| MAIN FLIGHTING                              | 11 ¾" (29.8 cm) OD x ¼" (0.6 cm) stretched and welded with Wear Edge Technology™ on critical points      |                        |   |  |                         |
| WEAR EDGE TECHNOLOGY™<br>(REINFORCED FLIGHT | ¼" (0.6 cm) plus 10 ga ribbon weld = ⅝" (0.8 cm) Wear Edge Technology™ on critical grain transfer points |                        |   |  |                         |
| AR BOOT FLIGHT                              | ¼" (0.6 cm)  |                        |   |  |                         |
| FLIGHTING SHAFT                             | High strength 3" (7.6 cm) OD x 11 ga tubing square flight connection                                     |                        |   |  |                         |
| UPPER BEARING                               | 2" (5.1 cm) taper roller bearing assembly  |                        |   |  |                         |
| GREASELESS HANGER<br>BEARING FOR BOOT (NEW) | 1 ⅝" (3.3 cm) ID, triple seal  |                        |   |  |                         |
| LOWER BEARING                               | Custom 2" (5.1 cm) taper roller bearing assembly   |                        |   |  |                         |
| TUBE TRUSSING                               | ⅜" (1 cm) aircraft type galvanized steel cable   |                        | Combination 2 ½" (6.4 cm) x 11 ga steel tubing & ⅜" (1 cm) galvanized cable |  |                         |
| HYDRAULIC LIFT                              | Dual 4" (10.2 cm) single acting cylinders with ⅝" (0.8 cm) aircraft cable                                |                        | Dual 4 ½" (11.4 cm) cylinders with ⅜" (1 cm) aircraft cable                 |  |                         |
| UNDERCARRIAGE                               | 4" (10.2 cm) x 11 ga A-frame   |                        | 3" (7.6 cm) x 6" (15.2 cm) HSS tubing                                       | 4" (10.2 cm) x 8" (20.3 cm) HSS tubing |                         |
| AXLE  | 4" (10.2 cm) x 4" (10.2 cm) square tubing  |                        |   |  |                         |
| HUB   | 6-Bolt agricultural type   |                        |   |  |                         |
| TIRES                                       | 16" (40.6 cm)  |                        |   |  |                         |
| PTO SHAFT                                   | 35E constant velocity with ⅝" (1 cm) shear bolt  |                        | 55E constant velocity with 2-bolt shear                                     |  |                         |
| PARKING JACK                                | 5000 lbs (2268 kg) side wind   |                        |   |  |                         |
| SPROCKET & CHAIN                            | Hardened tooth sprocket with HD #80 chain  |                        |   |  |                         |
| LOW PROFILE HOPPER DIMENSIONS               | 60" length (152.4 cm) x 40" width (101.6 cm) x 10 ½" height (26.7 cm)                                    |                        |   |  |                         |
| PSI REQUIRED TO RAISE AUGER                 | 1600 psi (110.3 bar)   |                        | 1800 psi (124.1 bar)  | 2000 psi (137.9 bar)                   | 2100 psi (144.8 bar)    |
| HP REQUIRED (WITH DRY WHEAT)                | 85-100 hp  | 110-125 hp             | 115-155 hp  | 125-165 hp                             | 140-185 hp              |
| WHEEL TREAD                                 | 124" (315 cm)  | 130" (330.2 cm)        | 146" - 182" (370.8 cm - 462.3 cm)   |  |                         |
| TRANSPORT HEIGHT (18" HITCH)                | 13' 2" (4 m)   | 14' 5" (4.4 m)         | 13' (4 m)   | 13' 3" (4 m)                           | 14' 5" (4.4 m)          |

## SPECIFICATIONS

|                  | A               | B               | C               | D                | E               | F               | G                  | H                | I                 | J                |
|------------------|-----------------|-----------------|-----------------|------------------|-----------------|-----------------|--------------------|------------------|-------------------|------------------|
| MKX <sup>2</sup> | HEIGHT LOWERED  | HEIGHT HALFWAY  | HEIGHT RAISED   | REACH LOWERED    | REACH HALFWAY   | REACH RAISED    | HEIGHT AT LIFTARMS | HEIGHT AT WHEELS | REACH TO LIFTARMS | REACH TO WHEELS  |
| <b>1364</b>      | 10'-2" (3.1 m)  | 26' (7.9 m)     | 40'-3" (12.3 m) | 31'-1" (9.5 m)   | 29'-11" (9.1 m) | 27'-8" (8.4 m)  | 15'-10" (4.8 m)    | 17'-8" (5.4 m)   | 26'-7" (8.1 m)    | 31'-11" (9.7 m)  |
| <b>1374</b>      | 11'-11" (3.6 m) | 29'-8" (9 m)    | 45'-7" (13.9 m) | 35'-7" (10.8 m)  | 34' (10.4 m)    | 31'-2" (9.5 m)  | 18'-6" (5.6 m)     | 20'-7" (6.3 m)   | 29' (8.8 m)       | 35'-11" (10.9 m) |
| <b>1384</b>      | 10'-6" (3.2 m)  | 36'-3" (11 m)   | 59'-5" (18.1 m) | 44'-10" (13.7 m) | 40'-9" (12.4 m) | 31'-5" (9.6 m)  | 23'-4" (7.1 m)     | 27'-11" (8.5 m)  | 29'-11" (9.1 m)   | 35' (10.7 m)     |
| <b>1394</b>      | 10'-6" (3.2 m)  | 37'-3" (11.4 m) | 60'-3" (18.4 m) | 45'-8" (13.9 m)  | 42'-11" (13 m)  | 37'-1" (11.3 m) | 24'-10" (7.6 m)    | 29'-9" (9.1 m)   | 31'-9" (9.7 m)    | 39'-10" (12.1 m) |
| <b>13114</b>     | 12' (3.7 m)     | 41'-2" (12.5 m) | 68'-11" (22 m)  | 56'-1" (17.1 m)  | 53'-4" (16.3 m) | 46'-2" (14.1 m) | 27'-6" (8.4 m)     | 33'-11" (10.3 m) | 38'-3" (11.7 m)   | 47'-1" (14.4 m)  |

Heights measured from bottom of auger spout to ground.

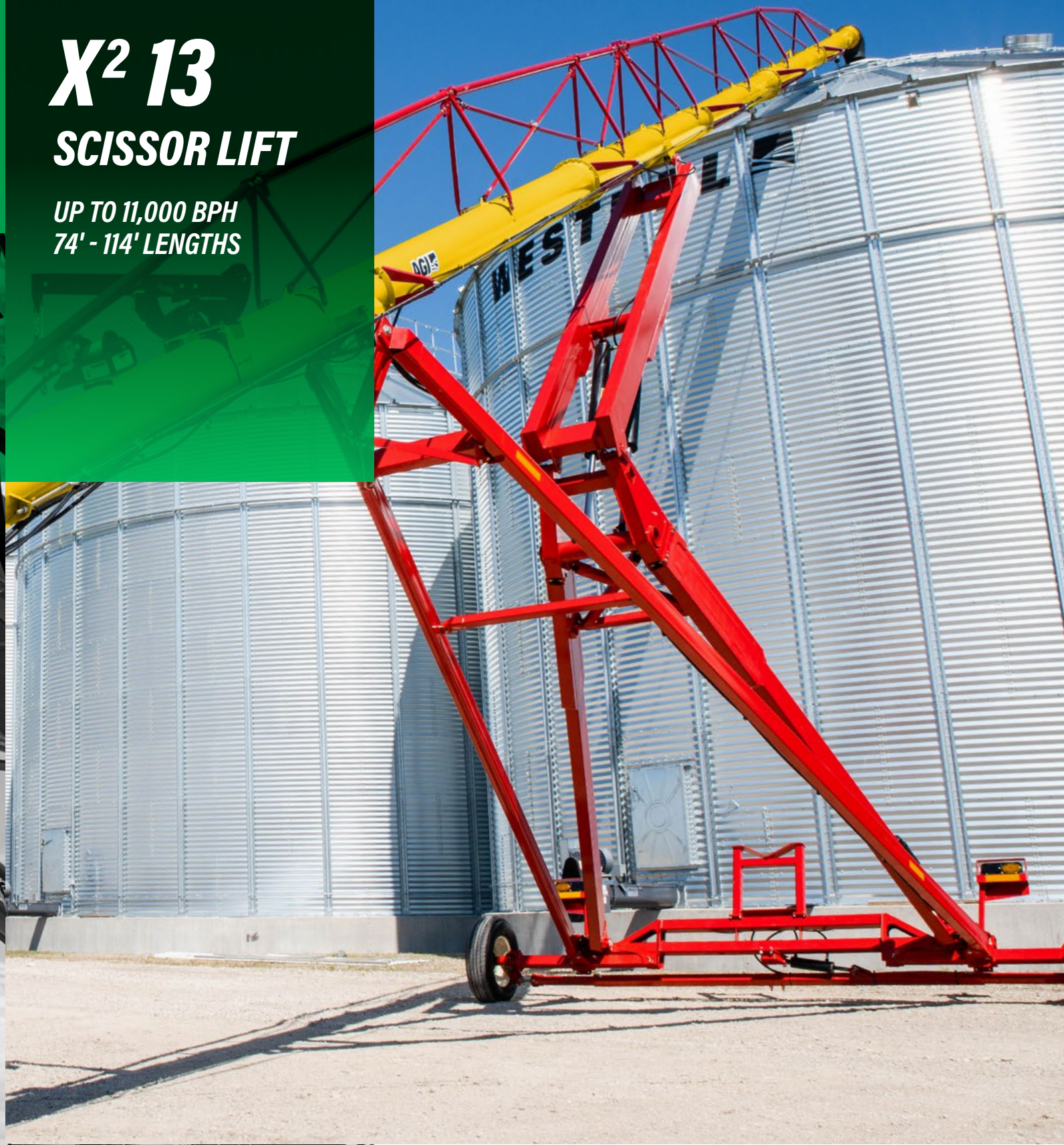




# ***X<sup>2</sup> 13***

## ***SCISSOR LIFT***

***UP TO 11,000 BPH  
74' - 114' LENGTHS***





## Scissor Lift

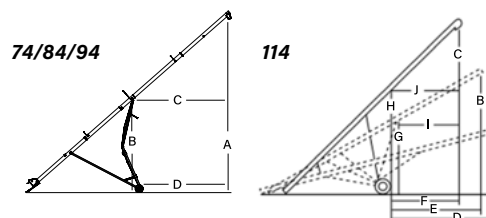
|  | X² 13-74  |  | X² 13-84                 |  | X² 13-94                                      |  | X² 13-114  |  |
|--|---|--|--------------------------|--|---|--|--|--|
| TUBE GAUGE                                   | 12 ga   |  |                          |  |   |  |  |  |
| TUBE CONNECTORS                              | Heavy-duty ¼" (0.6 cm) angle flange   |  |                          |  |   |  |  |  |
| MAIN FLIGHTING                               | 11 ¾" (29.8 cm) OD x ¼" (0.6 cm) stretched and welded with Wear Edge Technology™ on critical points |  |                          |  |   |  |  |  |
| WEAR EDGE TECHNOLOGY™<br>(REINFORCED FLIGHT) | Hopper + Incline Tube   |  |                          |  |   |  |  |  |
| AR FLIGHT                                    | ¼" AR boot flight   |  |                          |  |   |  |  |  |
| FLIGHTING SHAFT                              | High strength 3" (7.6 cm) OD x 11 ga tubing square flight connection                                |  |                          |  |   |  |  |  |
| UPPER BEARING                                | 2" taper roller bearing assembly  |  |                          |  |   |  |  |  |
| GREASELESS HANGER<br>BEARING FOR BOOT (NEW)  | 1 15⁄16" ID, triple seal  |  |                          |  |   |  |  |  |
| LOWER BEARING                                | Custom 2" taper roller bearing assembly   |  |                          |  |   |  |  |  |
| TUBE TRUSSING                                | ¾" (1 cm) aircraft type<br>galvanized steel cable   |  | 2 ½" (6.4 cm) steel tube |  |   |  |  |  |
| HYDRAULIC LIFT                               | Two 4" (10.2 cm) single acting cylinders  |  |                          |  | Two 4 ½" (11.4 cm) single<br>acting cylinders |  | Two 4 ½" (11.4 cm) single<br>acting cylinders with<br>¾" (1 cm) aircraft cable |  |
| UNDERCARRIAGE                                | 4" (10.2 cm) x 8" (20.3 cm) scissor lift  |  |                          |  | A-Frame 4" x 8" (10.2 x 20.3 cm) HSS tubing   |  |  |  |
| AXLE   | 3" (7.6 cm) x 6" (15.2 cm) tubing   |  |                          |  |   |  |  |  |
| HUB  | 6-Bolt agricultural type  |  |                          |  |   |  |  |  |
| TIRES  | 16" (40.6 cm) TRF   |  |                          |  |   |  |  |  |
| PTO SHAFT                                    | 35E constant velocity with ¾" (1 cm) shear bolt   |  |                          |  | 55E constant velocity with 2-bolt shear       |  |  |  |
| PARKING JACK                                 | 5000 lbs (2,268 kg) side wind   |  |                          |  |   |  |  |  |
| SPROCKET & CHAIN                             | Hardened tooth sprocket with HD #80 chain   |  |                          |  |   |  |  |  |
| LOW PROFILE HOPPER DIMENSIONS                | 60" (152.4 cm) length x 48" (121.9 cm) width x 10 ½" (26.7 cm) height with flat free tires          |  |                          |  |   |  |  |  |
| PSI REQUIRED TO RAISE AUGER                  | 1500 psi (103.4 bar)  |  | 1950 psi (134.4 bar)     |  | 2050 psi (141.3 bar)                          |  | 2100 psi (144.8 bar)   |  |
| HP REQUIRED (WITH DRY WHEAT)                 | 110-125 hp  |  | 115-135 hp               |  | 125-165 hp                                    |  | 140-185 hp   |  |
| WHEEL TREAD                                  | 146" - 182" (370.8 cm - 462.3 cm)   |  |                          |  |   |  |  |  |
| TRANSPORT HEIGHT (18" HITCH)                 | 11' 7" (3.5 m)  |  | 12' (3.7 m)              |  | 12' (4m)                                      |  | 14' 5" (4.4 m)   |  |

## SPECIFICATIONS

|                | A                 |                    |                     | B                 |                   |                   | C                   |                    |                     | D                   |                    |                    |
|----------------|-------------------|--------------------|---------------------|-------------------|-------------------|-------------------|---------------------|--------------------|---------------------|---------------------|--------------------|--------------------|
| X <sup>2</sup> | HEIGHT<br>LOWERED | HEIGHT<br>HALFWAY  | HEIGHT<br>RAISED    | HEIGHT<br>LOWERED | HEIGHT<br>HALFWAY | HEIGHT<br>RAISED  | HEIGHT<br>LOWERED   | HEIGHT<br>HALFWAY  | HEIGHT<br>RAISED    | HEIGHT<br>LOWERED   | HEIGHT<br>HALFWAY  | HEIGHT<br>RAISED   |
| 1374           | 8'-9"<br>(2.7 m)  | 31'-2"<br>(9.5 m)  | 49'-6"<br>(15.1 m)  | 4'-6"<br>(1.4 m)  | 12'-7"<br>(3.8 m) | 24'-4"<br>(7.4 m) | 39'-8"<br>(12.1 m)  | 38'-3"<br>(11.7 m) | 32'-6"<br>(9.9 m)   | 39'-8"<br>(12.1 m)  | 36'-7"<br>(11.2 m) | 30'-6"<br>(9.3 m)  |
| 1384           | 8'-9"<br>(2.6 m)  | 34'-8"<br>(10.6 m) | 55'-8"<br>(17 m)    | 4'-6"<br>(1.4 m)  | 15'-9"<br>(4.8 m) | 27'-5"<br>(8.4 m) | 44'-11"<br>(13.7 m) | 43'-3"<br>(13.2 m) | 36'-9"<br>(11.2 m)  | 44'-11"<br>(13.7 m) | 41'-6"<br>(12.6 m) | 34'-5"<br>(10.5 m) |
| 1394           | 8'-9"<br>(2.7 m)  | 38'-3"<br>(11.7 m) | 60'-11"<br>(18.6 m) | 4'-6"<br>(1.4 m)  | 17'-1"<br>(5.2 m) | 30'<br>(9.1 m)    | 50'-2"<br>(15.3 m)  | 48'-3"<br>(14.7 m) | 40'-11"<br>(12.5 m) | 50'-2"<br>(15.3 m)  | 46'-4"<br>(14.1 m) | 38'-5"<br>(11.7 m) |

|                | A                 | B                 | C                | D                | E                | F               | G                     | H                   | I                    | J                  |
|----------------|-------------------|-------------------|------------------|------------------|------------------|-----------------|-----------------------|---------------------|----------------------|--------------------|
| X <sup>2</sup> | HEIGHT<br>LOWERED | HEIGHT<br>HALFWAY | HEIGHT<br>RAISED | REACH<br>LOWERED | REACH<br>HALFWAY | REACH<br>RAISED | HEIGHT AT<br>LIFTARMS | HEIGHT AT<br>WHEELS | REACH TO<br>LIFTARMS | REACH TO<br>WHEELS |
| 13114          | 12' (3.7 m)       | 41'-2" (12.5 m)   | 68'-11" (21 m)   | 56'-1" (17.1 m)  | 53'-4" (16.3 m)  | 46'-2" (14.1 m) | 27'-6" (8.4 m)        | 33'-11" (10.3 m)    | 38'-3" (11.7 m)      | 47'-1" (14.4 m)    |

Heights measured from bottom of auger spout to ground.







# MKX<sup>2</sup> 16

UP TO 23,000 BPH  
85' - 125' LENGTHS



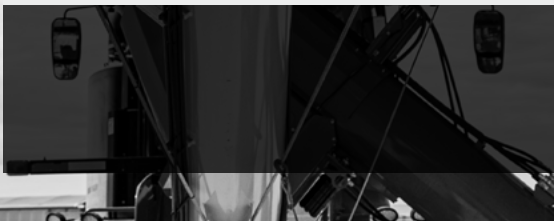
See new  
axles  
in action

## KEY FEATURES

- New open discharge spout
- Rigid steel trussing
- Stable A-frame support
- Standard steerable axles

## OPTIONS

- X-Tend hopper
- Poly flex spout





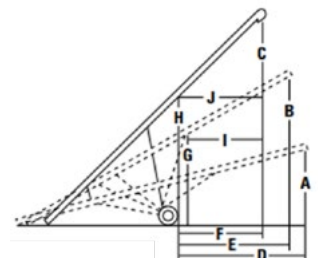
## Find the right auger

|  | MKX <sup>2</sup> 16-85   |  | MKX <sup>2</sup> 16-105 | MKX <sup>2</sup> 16-125 |
|--|--|--|-------------------------|-------------------------|
| TUBE GAUGE                                   | 10 ga  |  |                         |                         |
| TUBE CONNECTORS                              | ¼" (0.6 cm) angle flange   |  |                         |                         |
| MAIN FLIGHTING                               | 15" (38.1 cm) x ¼" (0.6 cm) stretched & welded   |  |                         |                         |
| WEAR EDGE TECHNOLOGY™<br>(REINFORCED FLIGHT) | ¼" (0.6 cm) main flighting with Wear Edge Technology™ on critical grain transfer points                  |  |                         |                         |
| AR BOOT FLIGHT                               | ¼" (0.6 cm)  |  |                         |                         |
| FLIGHTING SHAFT                              | 3.5" (8.9 cm) x 11 ga tubing; square flight connector  |  |                         |                         |
| GREASELESS HANGER<br>BEARING FOR BOOT (NEW)  | 2 ⅜" (6 cm) ID, triple seal  |  |                         |                         |
| UPPER BEARING                                | 2" (5.1 cm) taper roller bearing assembly  |  |                         |                         |
| SPEED REDUCER GEARBOX                        | Enclosed, cast casing, 1000 rpm reducing gearbox (540 rpm) with reversing capability                     |  |                         |                         |
| TUBE TRUSSING                                | 3.5" (8.9 cm) x 11 ga tubing; ½" (1.3 cm) cable stays  |  |                         |                         |
| HYDRAULIC LIFT                               | 2" (5.1cm) x 4 ½" (11.4 cm)<br>cylinder with ⅜" (1 cm) cable   | 2" (5.1cm) x 6 ½" (16.5 cm) bore cylinders; ½" (1.3 cm) aircraft cable |                         |                         |
| UNDERCARRIAGE                                | 4" (10.2cm) x 8" (20.3cm) HSS tubing   |  |                         |                         |
| AXLE   | 4" (10.2 cm) x 4" (10.2 cm) x ⅜" (0.5cm) tubing; 4" (10.2 cm) x 4" (10.2 cm) x ¼" (0.6 cm) on extensions |  |                         |                         |
| HUB  | 8-bolt agricultural type   |  |                         |                         |
| TIRES  | 22.5" (57.2 cm) agricultural tires   |  |                         |                         |
| PTO SHAFT                                    | 55E double CV with 2-bolt shear  |  |                         |                         |
| PARKING JACK                                 | 12,000 lbs (5443.1kg)  |  |                         |                         |
| LOW PROFILE HOPPER DIMENSIONS                | 68" length (172.7 cm) x 48" width (121.9 cm) x 11" height (27.9 cm)                                      |  |                         |                         |
| PSI REQUIRED TO RAISE AUGER                  | 1800 psi (124.1 bar)   | 1700 psi (117.2 bar)   | 2000 psi (137.9 bar)    |                         |
| HP REQUIRED (WITH DRY WHEAT)                 | 150 - 175 hp   | 170 - 200 hp   | 195 - 225 hp            |                         |
| WHEEL TREAD                                  | 148" - 182" (375.9 - 462.3 cm)   |  |                         |                         |
| TRANSPORT HEIGHT (18" HITCH)                 | 15' 6" (4.7 m)   | 15' 6" (4.7 m)   | 17' 6" (5.3 m)          |                         |

## SPECIFICATIONS

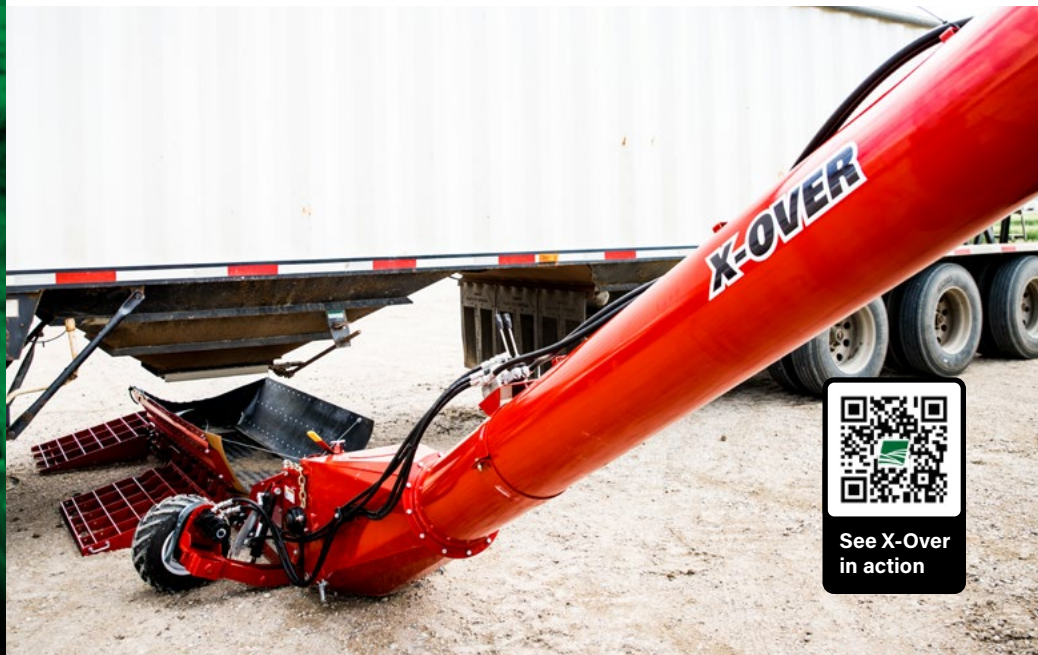
|                        | A                 | B                   | C                   | D                   | E                  | F                   | G                     | H                   | I                    | J                  |
|------------------------|-------------------|---------------------|---------------------|---------------------|--------------------|---------------------|-----------------------|---------------------|----------------------|--------------------|
| <b>MKX<sup>2</sup></b> | HEIGHT<br>LOWERED | HEIGHT<br>HALFWAY   | HEIGHT<br>RAISED    | REACH<br>LOWERED    | REACH<br>HALFWAY   | REACH<br>RAISED     | HEIGHT AT<br>LIFTARMS | HEIGHT AT<br>WHEELS | REACH TO<br>LIFTARMS | REACH TO<br>WHEELS |
| <b>1685</b>            | 12'-7"<br>(4.4 m) | 33'-4"<br>(10.1 m)  | 47'-3"<br>(14.4 m)  | 46'<br>(14 m)       | 43'-4"<br>(13.2 m) | 39'-10"<br>(12.1 m) | 23'-8"<br>(7.2 m)     | 28'-7"<br>(8.7 m)   | 26'-4"<br>(8 m)      | 31'-9"<br>(9.7 m)  |
| <b>16105</b>           | 12'<br>(3.7 m)    | 42'-11"<br>(13.1 m) | 77'-5"<br>(23.6 m)  | 54'-10"<br>(16.7 m) | 51'-3"<br>(15.6 m) | 40'-7"<br>(12.4 m)  | 30'-2"<br>(9.2 m)     | 36'-5"<br>(11.1 m)  | 32'-1"<br>(9.8 m)    | 42'-8"<br>(13 m)   |
| <b>16125</b>           | 14'-3"<br>(4.3 m) | 48'-6"<br>(14.8 m)  | 87'-10"<br>(26.8 m) | 68'-8"<br>(20.9 m)  | 63'-8"<br>(19.4 m) | 48'-9"<br>(14.9 m)  | 31'-6"<br>(9.6 m)     | 37'-1"<br>(11.3 m)  | 44'-4"<br>(13.5 m)   | 56'-9"<br>(17.3 m) |

Heights measured from bottom of auger spout to ground.



# HOPPER

## OPTIONS



### **X-TEND**

13" // 16"

#### KEY FEATURES

- Retracts and moves side-to-side
- Low profile hopper with dual flighting
- Hydraulic controls

### **X-OVER**

13"

#### KEY FEATURES

- Drive over belt-driven hopper
- Reinforced drive over deck and ramps
- Mechanical drive hopper (NEW)

### **POWER SWING**

10" // 13" // 16"

#### KEY FEATURES

- 12V remote electric or hydraulic drive









STORAGE



STRUCTURES



PROCESS



HANDLING



TECHNOLOGY



ENGINEERING



PROJECT MANAGEMENT

AGI is a leading provider of equipment solutions for agriculture bulk commodities including seed, fertilizer, grain, and feed systems with a growing platform in providing equipment and solutions for food processing facilities. AGI has manufacturing facilities in Canada, the United States, the United Kingdom, Brazil, India and Italy and distributes its products globally.